

Technical data sheet for

INDUCTION COOKTOP 900mm

IN8400E-CB



IN8400E-CB

- Heavy-duty construction
- Four 5KW induction zones
- Cabinet base with doors
- Stainless steel cabinet interior
- Stainless steel exterior
- Easy clean
- Fully modular
- Low back model (INL) available

Overall Construction

COOKTOP

- Welded hob with 1.5mm stainless steel bull nose
- Splashback and side panels 1.2mm 304 stainless steel
- Front panels 0.9mm 304 stainless steel
- 6mm thick ceramic glass cooking surface

CABINET BASE

- Fully modular for match suite finish
- Double skin 0.9mm stainless steel interior and exterior
- 63mm dia. heavy-duty 1.2mm stainless steel legs with adjustable feet

Controls

- Large easy use control knob
- Four 270mm diameter induction zones
- Infinitely variable power controls for each induction zone
- Automatic pan detection switches cooking zone off when pan removed
- Overheating safety device on each zone
- Indicator lights for power and heating for each induction zone

Cleaning and Servicing

- All models with easy clean stainless steel external finish
- Fully sealed cooking surface
- Front service access

PRE-RELEASE
SPECIFICATION



Technical data sheet for INDUCTION COOKTOP 900mm



Specifications

COOKTOP

4 x 5kW induction plates
Ø 270mm cooking zones

Electrical requirements

IN8400E
20kW, 400-415Vac, 50/60hz, 3P+N+E
28A/phase

Electrical connection

130mm from RH side, 31mm from rear
785mm from floor

DIMENSIONS

Width 900mm
Depth 805mm
Height 915mm
Incl. splashback 1130mm
Incl. low back 972mm

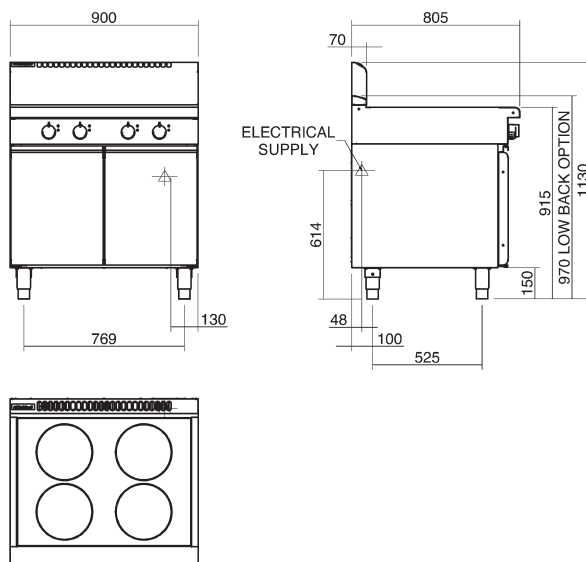
PACKING DATA

1.02m3
Width 940mm
Depth 865mm
Height 1255mm

OPTIONS AT EXTRA COST

Joining caps
Castors
Plinth mounting

IN8400E-CB CABINET BASE



Australia
www.moffat.com.au
New Zealand
www.moffat.co.nz

Australia
Moffat Pty Limited

Victoria/Tasmania
740 Springvale Road
Mulgrave, Victoria 3170
Telephone 03-9518 3888
Facsimile 03-9518 3833
vsales@moffat.com.au

New South Wales
Telephone 02-8833 4111
nswsales@moffat.com.au

South Australia
Telephone 03-9518 3888
vsales@moffat.com.au

Queensland
Telephone 07-3630 8600
qldsales@moffat.com.au

Western Australia
Telephone 08-9202 6820
bgarcia@moffat.com.au

New Zealand
Moffat Limited

Christchurch
Telephone 03-389 1007
sales@moffat.co.nz

Auckland
Telephone 09-574 3150
sales@moffat.co.nz



Designed and manufactured by



ISO9001
All Waldorf products are designed and manufactured by Moffat using the internationally recognised ISO9001 quality management system, covering design, manufacture and final inspection, ensuring consistent high quality at all times.

PRE-RELEASE
SPECIFICATION

In line with policy to continually develop and improve its products, Moffat Limited reserves the right to change specifications and design without notice.

© Copyright Moffat Limited
Moffat/1145/09.09

